

110/804 Bourke Street Waterloo NSW

2  2  1 

Located within the Tiara building Waterloo. This single level apartment offers light and bright, open plan living that flows to a large sunny balcony. Perfect for entertaining.

features include:

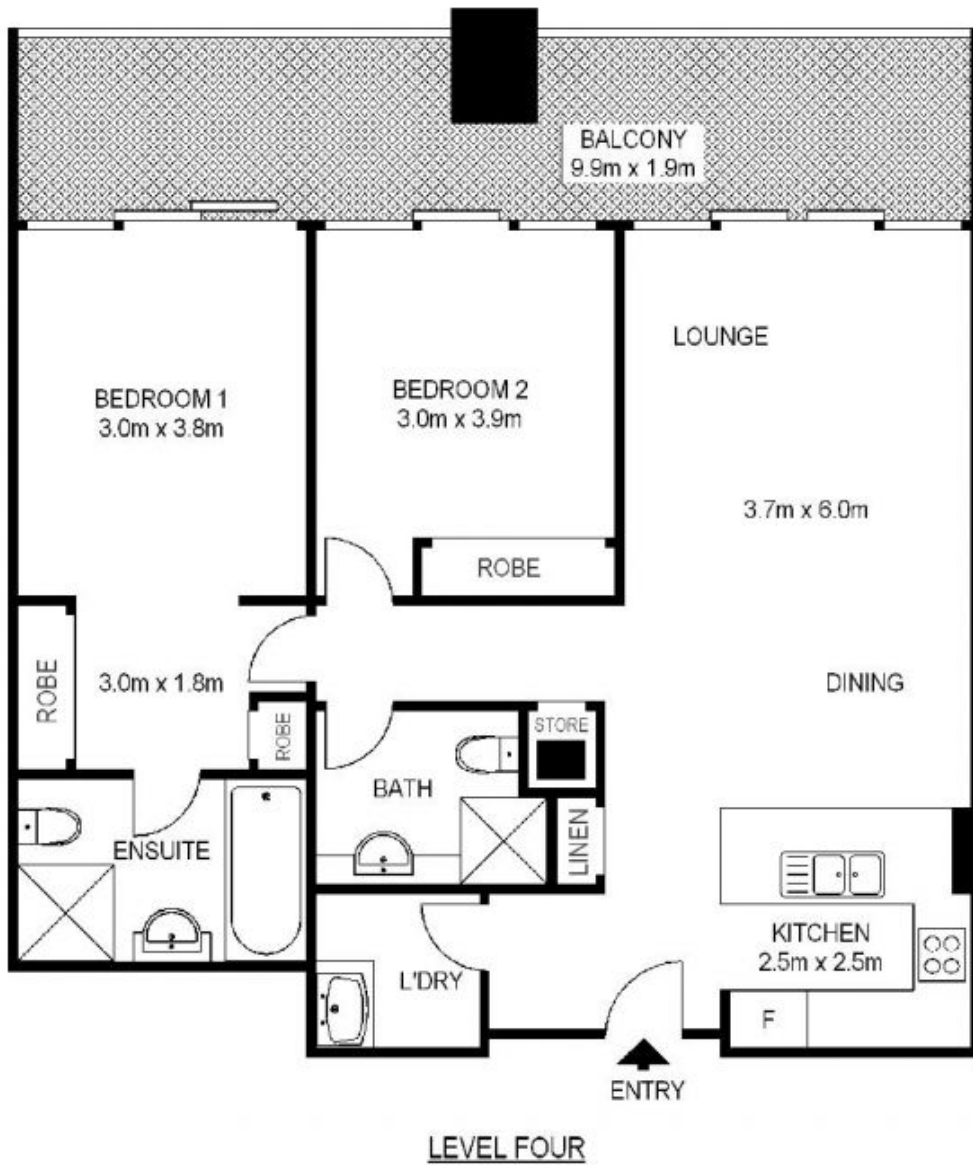
Open plan living and dining area opening to a large balcony
Modern kitchen, stainless Smeg appliances, gas cook top
Bedrooms with built ins and glass doors opening to balcony
Internal laundry and two linen cupboards
Ducted reverse cycle air conditioning throughout
Two modern bathrooms, ensuite with bath and shower
Swimming pool, sauna, gym and BBQ area
Secure basement parking
Moments to transport and the CBD

Building Size : 96 sqm
View : <https://www.shearerproperty.com.au/sale/nsw/eastern-suburbs/waterloo/residential/apartment/5823277>



Sue Shearer
02 9310 1801

Enjoy the convenience of living in the heart of Waterloo



BASEMENT



Scale shown in metres. All dimensions herein are approximate and gathered from sources believed to be reliable. Whilst every effort is made for the accuracy of our floor plans, interested parties should rely on their own enquires. Floor Plans by Industrie Media. www.industriemedia.com.au

S1

110/804 Bourke Street, Waterloo

shearer
property