



G604/780 Bourke Street Redfern NSW

2 2 1

Overlooking the lush Grosvenor gardens at Moore Park Gardens, this two bedroom split level apartment with tasteful renovations offers a fantastic open plan layout that flows to a quiet, private, north facing entertainers balcony.

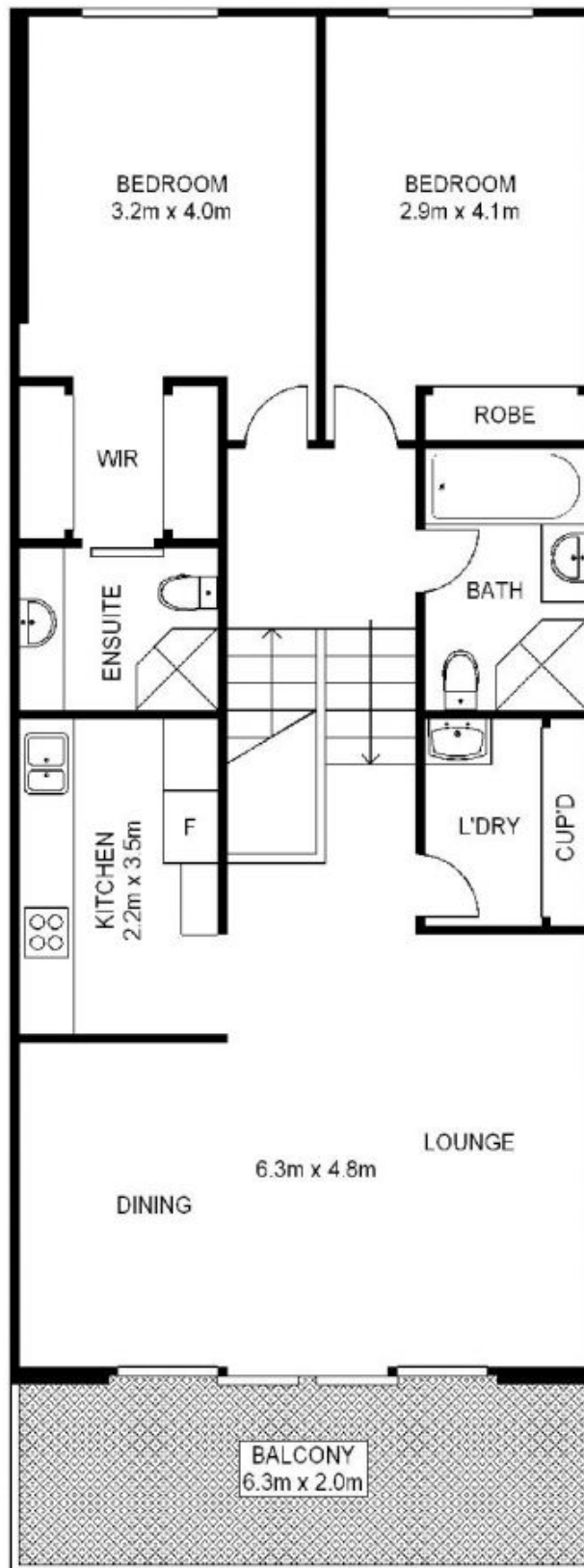
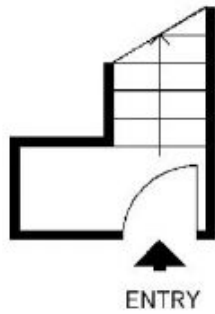
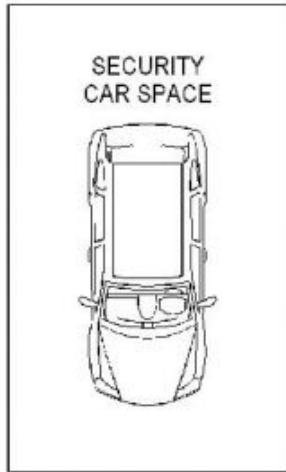
View : <https://www.shearerproperty.com.au/sale/nsw/ea-stern-suburbs/redfern/residential/apartment/5823255>

Features Include:

- Great separation between formal living and bedrooms
- Spacious open plan living/ dining opening to northerly balcony
- Modern renovated kitchen, stainless Boch appliances
- North to south air flow throughout, Internal laundry
- Large bedrooms, built in robes, main with renovated ensuite
- Renovated bathroom with bath and Villeroy & Boch fittings
- Security building with lift access, secure car space
- On site building management
- 25m swimming pool, gym and sauna



Sue Shearer
02 9310 1801



Scale shown in metres. All dimensions herein are approximate and gathered from sources believed to be reliable. Whilst every effort is made for the accuracy of our floor plans, interested parties should rely on their own enquires. Floor Plans by Industrie Media. www.industriemedia.com.au

S1

G604/780 Bourke Street, Redfern

shearer
property