



## 312/320 Harris Pyrmont NSW

2 2 1

Situated within the popular M Central complex, this warehouse conversion offers a generous open plan layout that comprises of unique wood, concrete beams and brick finishes.

**View** : <https://www.shearerproperty.com.au/sale/nsw/sydney-city/pyrmont/residential/apartment/5823237>

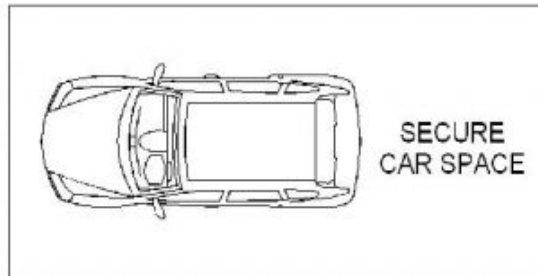
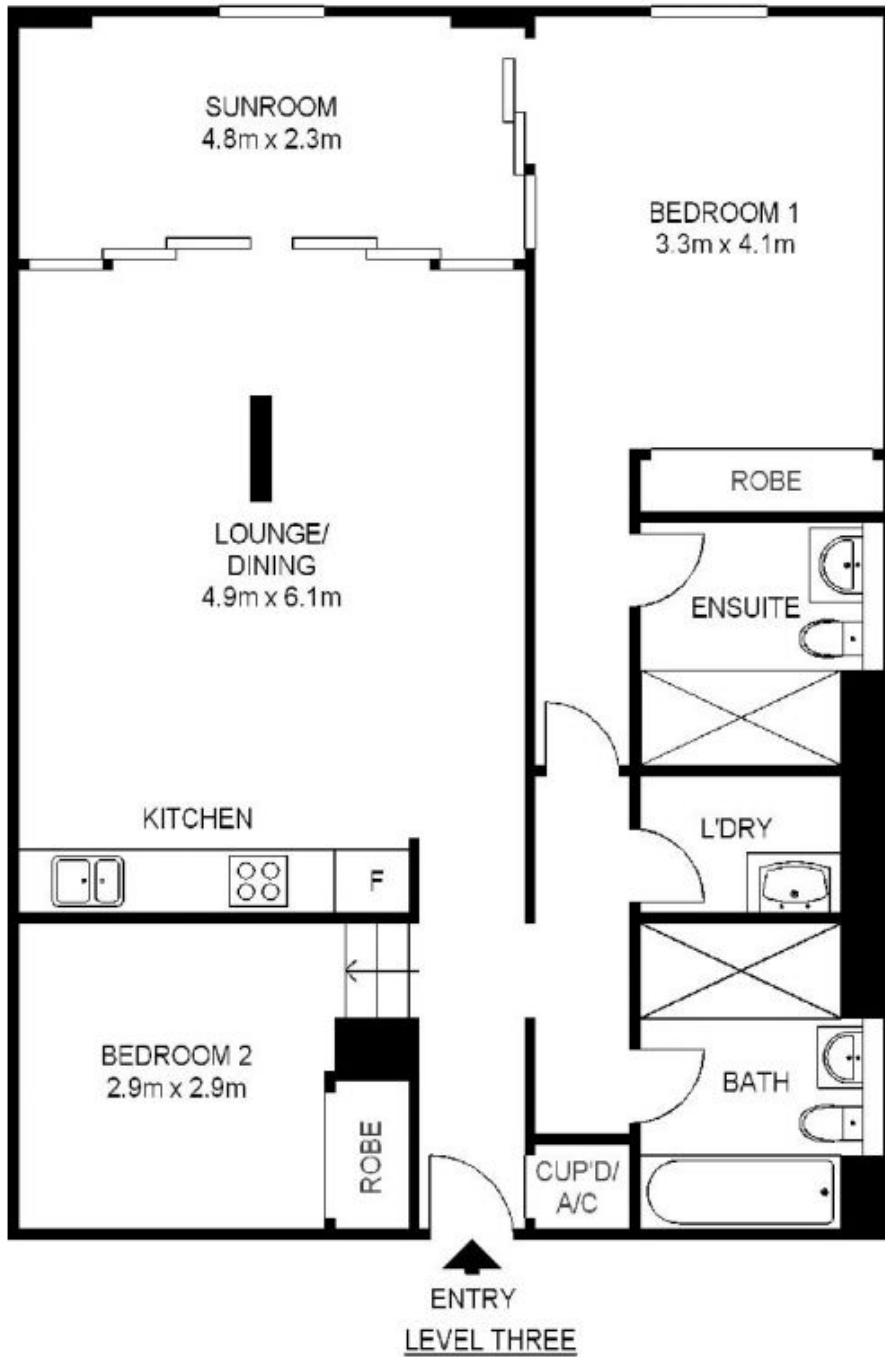
### Features include:

- High ceilings, polished floors and original windows
- Large bedrooms with built in robes, internal laundry
- Spacious sun room/study, reverse cycle air conditioning
- Modern kitchen, stainless appliances and gas cooking
- Designer bathrooms, main with bath tub
- Secure parking on same level as the apartment
- Security building with on site building manager



**Sue Shearer**  
02 9310 1801

Conveniently positioned only moments to exciting Darling Harbour cafes, restaurants and night life via the under



Scale shown in metres. All dimensions herein are approximate and gathered from sources believed to be reliable. Whilst every effort is made for the accuracy of our floor plans, interested parties should rely on their own enquires. Floor Plans by Industrie Media. [www.industriemedia.com.au](http://www.industriemedia.com.au)



S1

312/320 Harris Street, Pyrmont

**shearer**  
property