



609/320 Harris Street Pyrmont NSW

3 2 2

Positioned on the top floor of the popular MCentral complex. This light filled apartment takes full advantage of it's excellent position, offering a superb open plan layout that flows seamlessly to an entertainer's balcony with stunning area views.

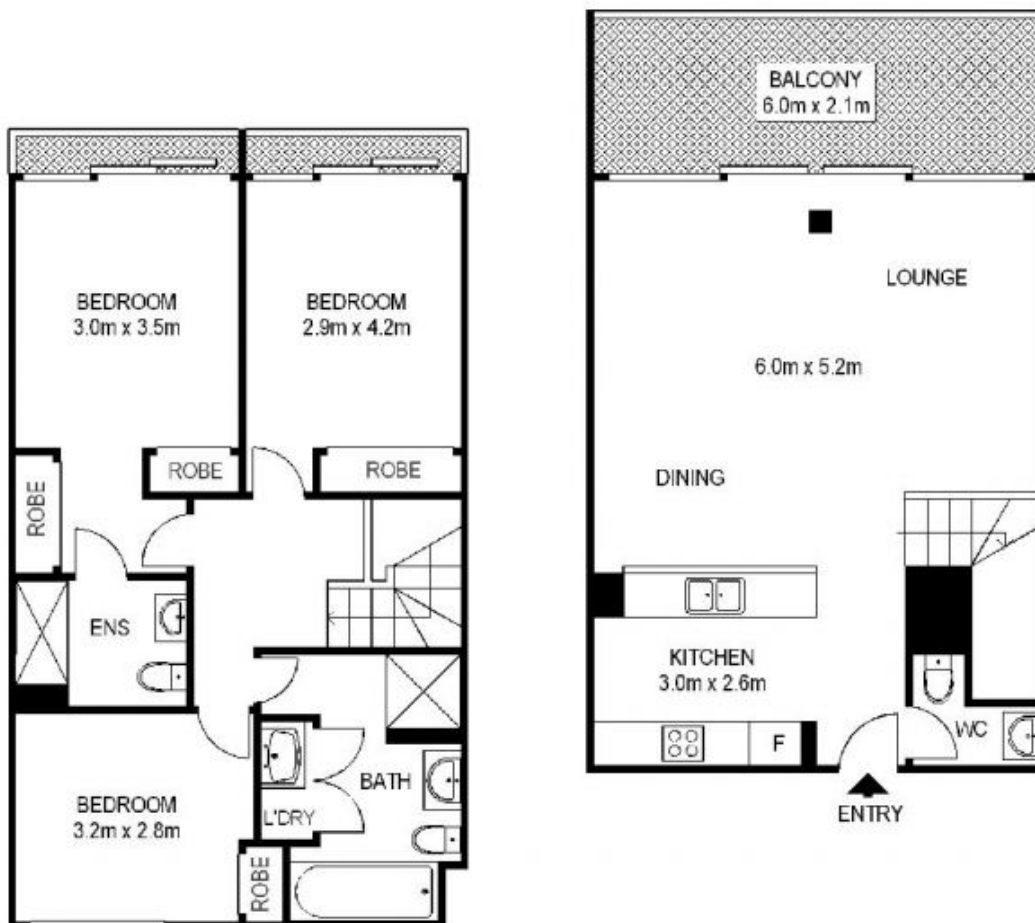
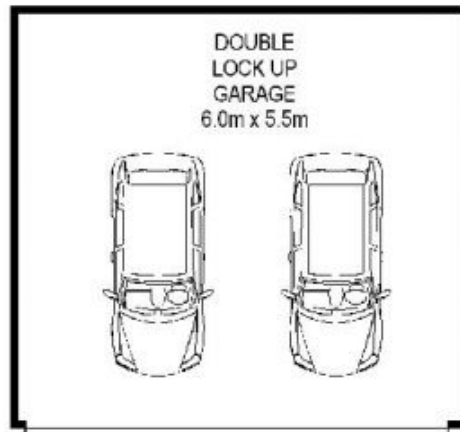
Building Size : 118 sqm
View : <https://www.shearerproperty.com.au/sale/nsw/sydney-city/pyrmont/residential/apartment/5823232>

Features Include:

Open plan living/dining, freshly polished floorboards
Floor to ceiling glass doors opening onto balcony
Modern kitchen, stainless appliances, gas cooking
Three bedrooms with built in robes, main with ensuite
Air conditioning, security, lock up double parking
Two ultra modern bathrooms, internal laundry
On site building management
Additional guest bathroom



Sue Shearer
02 9310 1801



Scale shown in metres. All dimensions herein are approximate and gathered from sources believed to be reliable. Whilst every effort is made for the accuracy of our floor plans, interested parties should rely on their own enquires. Floor Plans by Industrie Media. www.industriemedia.com.au



S1

609/320 Harris Street, Pyrmont

shearer
property

