



L501/780 Bourke Street Redfern NSW

2 1 2

Privately positioned within the Lemont building of the the award winning Moore Park Gardens complex. This beautifully presented north facing, two story apartment offers a fantastic layout with separate living areas and fabulous, private terrace, perfect for entertaining or relaxing.

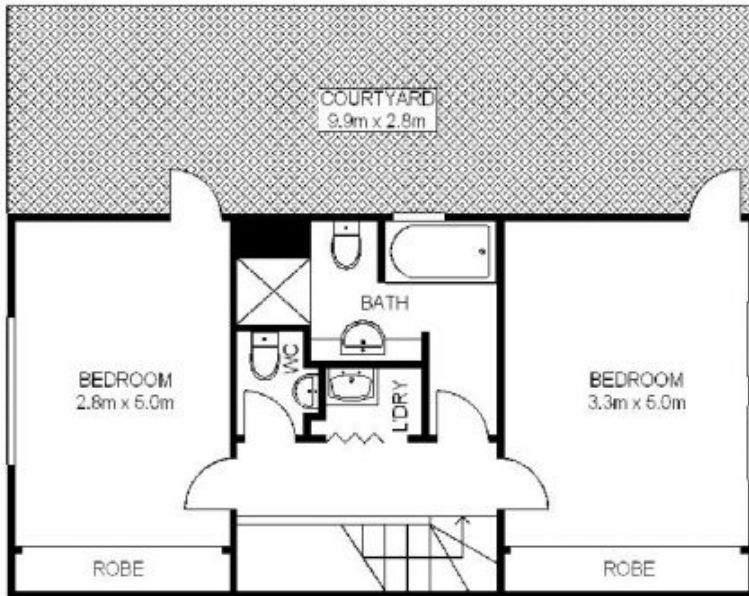
Building Size : 130 sqm
View : <https://www.shearerproperty.com.au/sale/nsw/eastern-suburbs/redfern/residential/apartment/5823222>

Features Include:

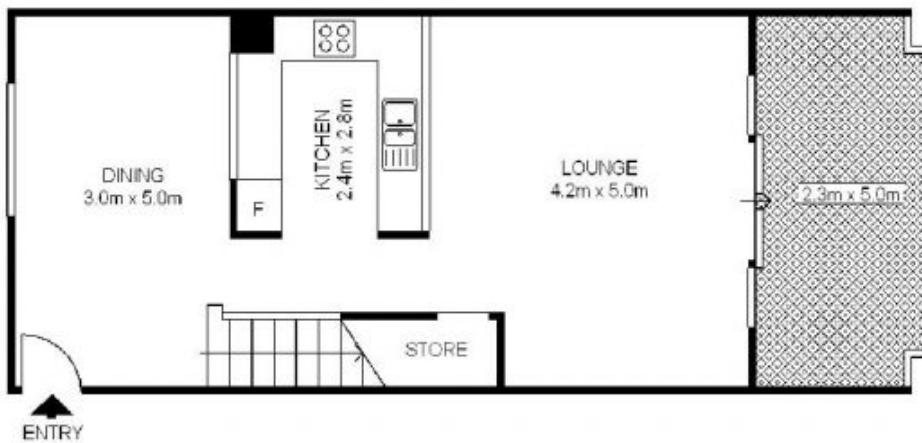
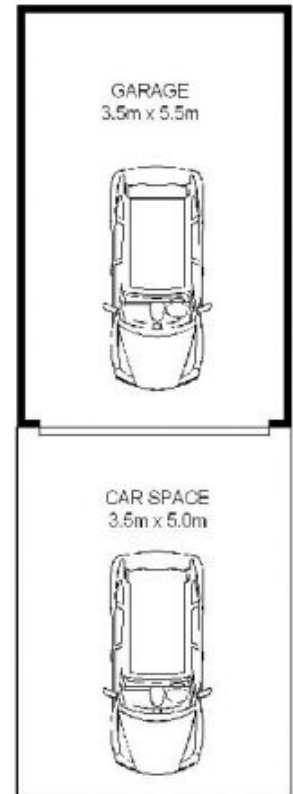
Separate dining, lounge opening to north facing balcony
 Two bedrooms with built ins both opening to private courtyard
 Modern kitchen with dishwasher and gas cooking
 Modern bathroom with separate shower and bath
 Additional guest toilet, internal laundry
 Security building, on site building management
 Resort style facilities including pool, gym and sauna



Sue Shearer
 02 9310 1801



TOP LEVEL



ENTRY LEVEL



Scale shown in metres. All dimensions herein are approximate and gathered from sources believed to be reliable. Whilst every effort is made for the accuracy of our floor plans, interested parties should rely on their own enquires. Floor Plans by Industrie Media. www.industriemedia.com.au



S1

501/780 Bourke Street, Redfern

shearer
property