



201/320 Harris Street PYRMONT NSW

1 1

Located within the historic Pitt Son & Badgery wool store, this unique development offers contemporary apartment living with distinctive original features. Situated only metres from the iconic Darling Harbour with a direct passage way from the building. This is your opportunity to enjoy the fine dining and entertainment Darling Harbour has to offer.

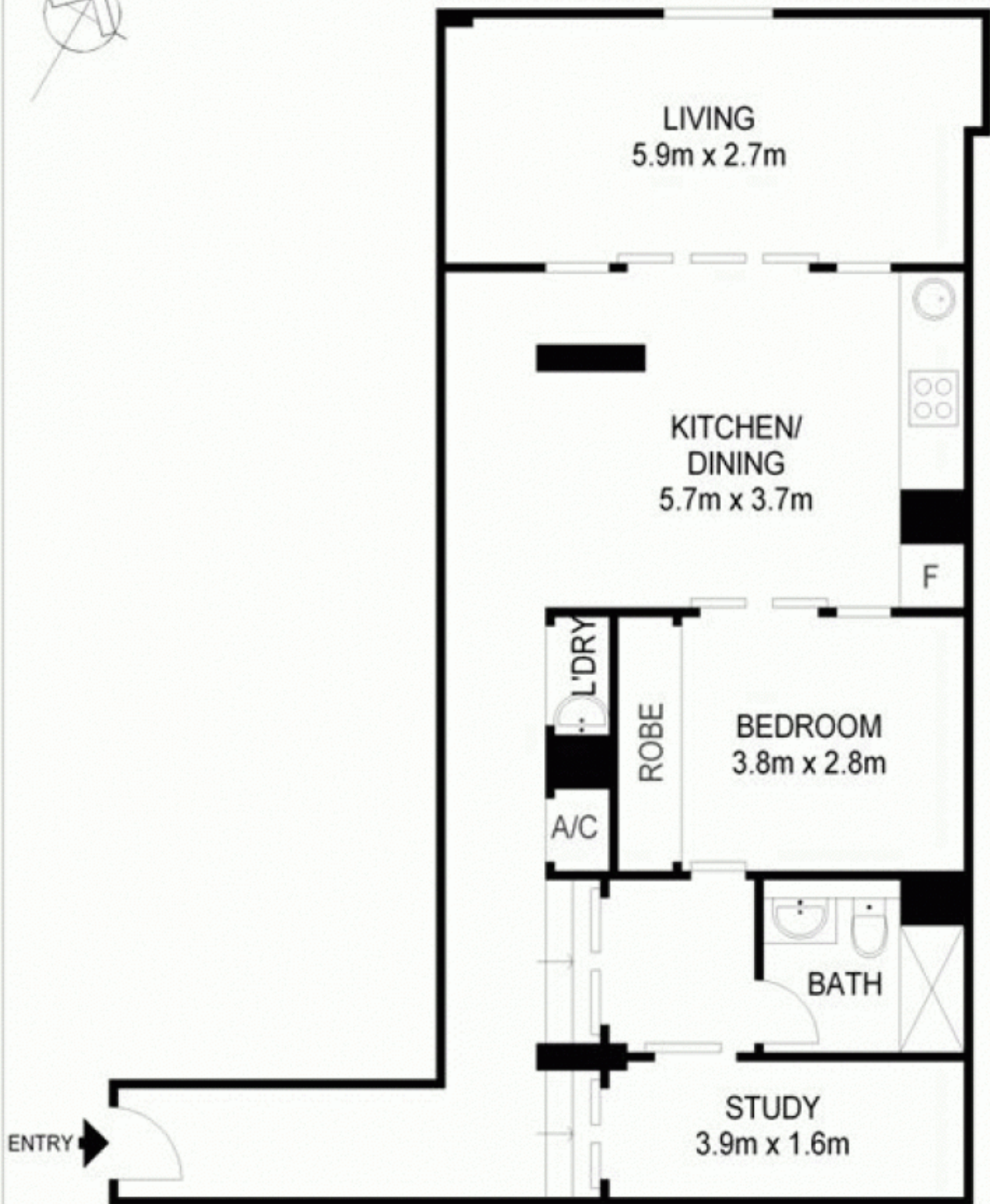
- Spacious modern living with sunroom and separate study
- Gourmet kitchen boasts stainless steel appliances and caesar stone bench top
- Generous size bedroom with built in wardrobe
- Polished timber flooring and high ceilings
- Reverse cycle air conditioning throughout
- Stunning presentation, with rich colour scheme, exposed original brickwork and open plan layout

Building Size : 9 sqm
View : <https://www.shearerproperty.com.au/sale/nsw/sydney-city/pyrmont/residential/apartment/5823171>



Sue Shearer
02 9310 1801

An exceptional restoration, displaying high quality finishes



LEVEL TWO

201/320 Harris street, Pyrmont



Scale

S1

indusriemedia
PROPERTY MARKETING

* Disclaimer : All dimensions are approximate and should only be used as a guide.
They are not to scale and no liability will be accepted.