

## 411/380 Harris Street PYRMONT NSW

1 1

**View :** <https://www.shearerproperty.com.au/sale/nsw/sydney-city/pyrmont/residential/house/5823152>

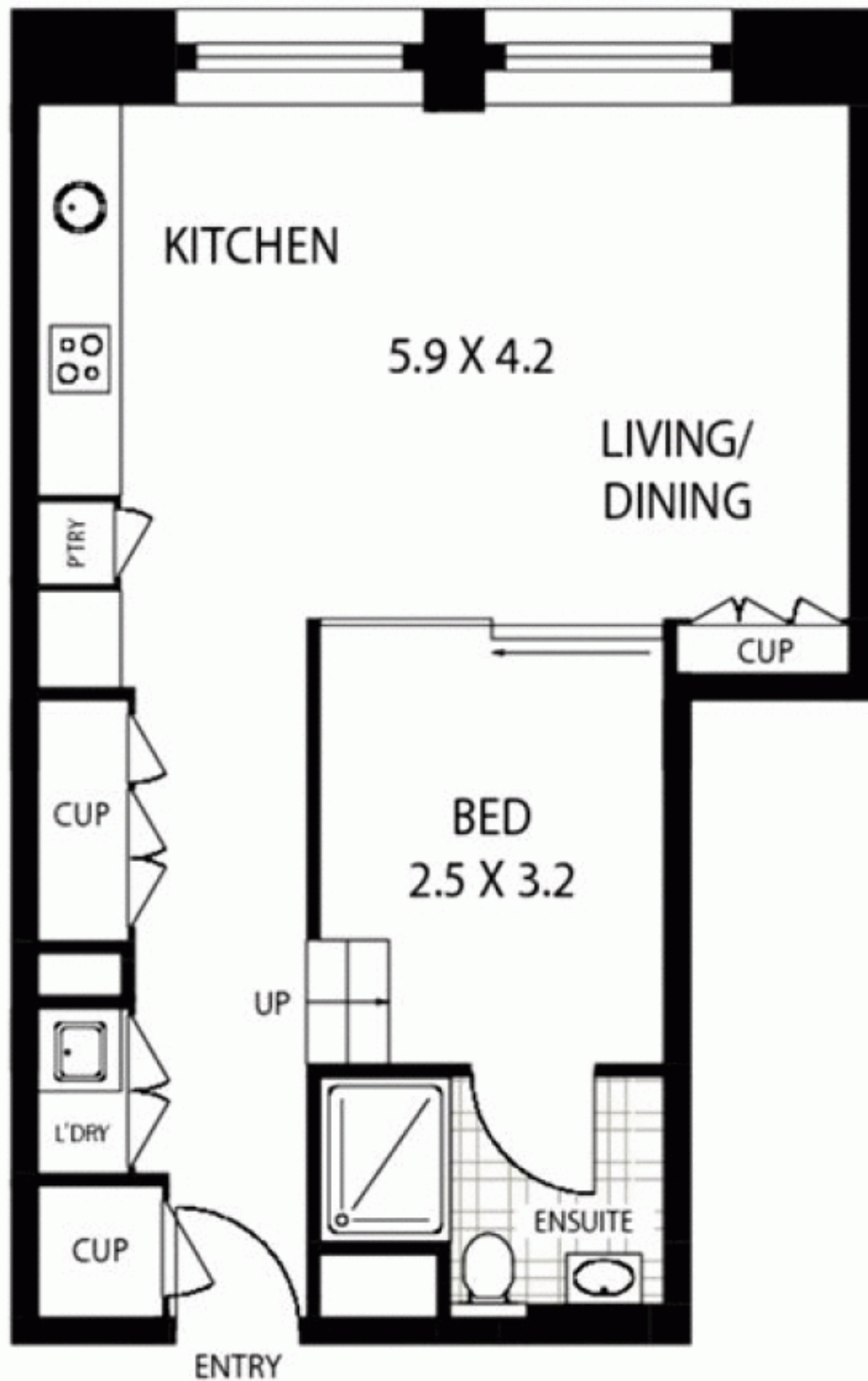
M-Central is one of Sydney's most historic building conversions and is conveniently positioned moments from Darling Harbour and the city.

This loft style apartment has an excellent floor layout with open plan living, high ceilings and polished floorboards. The gourmet kitchen has caesar stone bench tops and stainless steel finishes. It also features gas cooking, dishwasher and microwave, internal laundry and dryer.

M-Central is also famous for its fabulous award winning roof top garden with B.B.Q. and entertainment facilities. It is a security building and has its own on-site building manager.



**Sue Shearer**  
02 9310 1801



• APPROX: GROSS INTERNAL AREA ~ 45 SQM

411/380 HARRIS STREET

PYRMONT

**\*Disclaimer:** mhg - mind the gap floor plans & site plans are intended as a guide only. Individuals **should always** rely on their own enquiries for exact measurements and no warranties are intended or given. **Please Note:** Any internal area measurement total that may be included does not include any void spaces or recesses. Any external area measurement total that may be included does not include the total site plan area (ie total grounds and garden areas). mhg - mind the gap - 1 300 133 145 - [www.mindthegap.com.au](http://www.mindthegap.com.au)